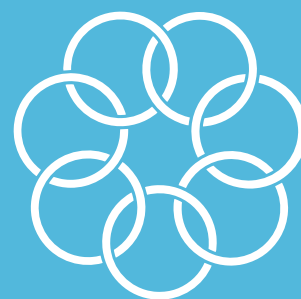
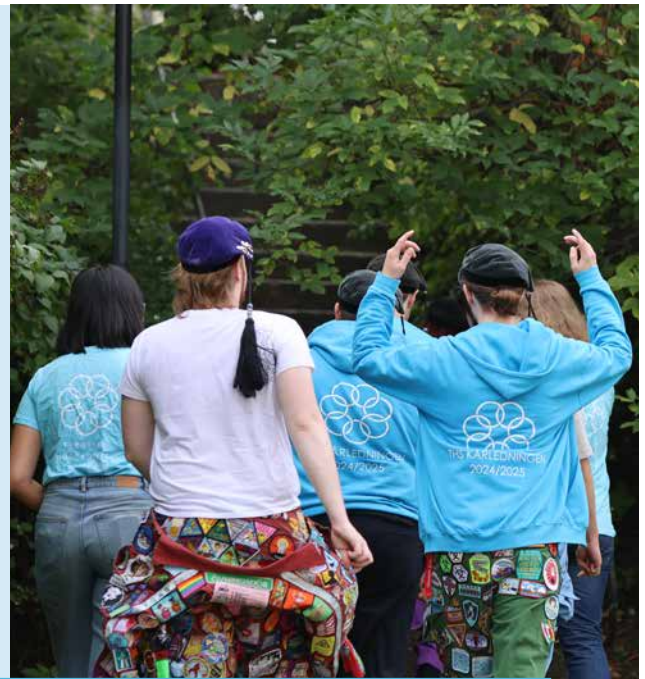


THS – YOUR STUDENT UNION



TEKNISKA
HÖGSKOLANS
STUDENTKÅR



SWEDEN`S OLDEST TECHNOLOGICAL STUDENT UNION

Welcome to the Student Union (THS) at the Royal Institute of Technology (KTH)! We are Sweden's oldest technological student union, founded on January 30, 1902, in auditorium R in KTH's premises on Drottninggatan in Stockholm. We are tremendously proud of our legacy, and we boast a long and incredibly rich history.

In 1903, for example, THS's first banner was finished. The designer Lars Israel Wahlman produced the flag, but there was great discussion as to what words should adorn it. In the end, the people involved agreed on "For peaceful achievement", as in troubled times it was believed that the aim of engineers should be to produce great works in a peaceful way.

In 1930, our old union house, Gamble, was properly celebrated with a three-day party. That same year, construction of the new house began. The name Nymble, of course! In connection with the inauguration of Nymble, our new emblem was also presented. Submitted by Clas Almqvist, it consists of seven rings that represent our then seven sections. If you want to know more about our history, you can read the book "Osqulda och Osqar"!

Vision

THS provides all students with a meaningful future, studies, and leisure opportunities.

Foundation

THS's activities are based on a strong organisation.

Future

All students are aware of their unique expertise and their career opportunities.

Education

All students should feel that their education is relevant during and after their studies.

Welfare – leisure time

All students have the opportunity to take part in meaningful leisure activities that allow for development.

Welfare – everyday life

All students have a carefree everyday life.

Values

Community, Development, Happiness

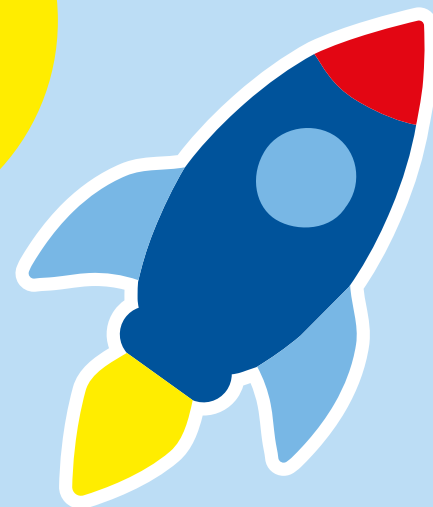
INGENJÖR PÅ LIDL?

Natürlich! Hos oss finns mängder av möjligheter i en internationell miljö inom bl.a. supply chain, IT, hållbarhet, logistik, analytics och fastighetsutveckling.

Våra butiker och låga priser har du koll på redan, men bakom kulisserna hittar du alla som gör det möjligt. Joina vårt gäng och ta del av fina förmåner, massor av möjligheter till utveckling och en trygg start på din karriär!



**Bli en del av
#teamlidl!**



**Redo för livet
efter examen?**

Läs mer om våra möjligheter för dig som nyexad. Gå in på jobb.lidl.se, eller följ oss på LinkedIn.



THE MANAGEMENT TEAM AND ITS AREAS OF RESPONSIBILITY

As a member of THS, there is ample opportunity to move on to a role with greater responsibility. The THS Management Team is responsible for the implementation of the central and joint activities, and here you can take on a role as chairman, business manager, reception coordinator, editor-in-chief of *Osqledaren* – and much more!

The Management Team consists of students who work full-time or part-time at THS and are paid for a one-year period.

The THS Management Team works with three main tasks: student involvement, contact with business, and social activities. Every member of the THS Management Team is responsible for specific issues and subgroups, and the team is jointly responsible for the day-to-day operations. It is also

the Management Team that coordinates and anchors the central activities with the chapters.

We actively work on sustainability issues in both our subgroups and chapters. As a result, it goes without saying that THS supports the United Nations' global sustainable development goals.

THS CENTRAL – OUR ORGANISATION

The THS Union Council (KF) is THS's highest decision making body. Each section elects a number of representatives to the Union Council, which is the forum where the sections meet and decide on overall common matters and share their own questions and experiences from the sections. It is the Union Council that adopts THS's statutes and activity plan. It is also the Union Council that conducts elections to the Union Board, the Management Team and other key bodies.

The Union Board is responsible for strategic decisions and for coordinating and anchoring THS's overarching issues and areas of activity that have been determined by the Union Board. The Board's decisions are implemented by the Management Team, which works full-time with the union's tasks.

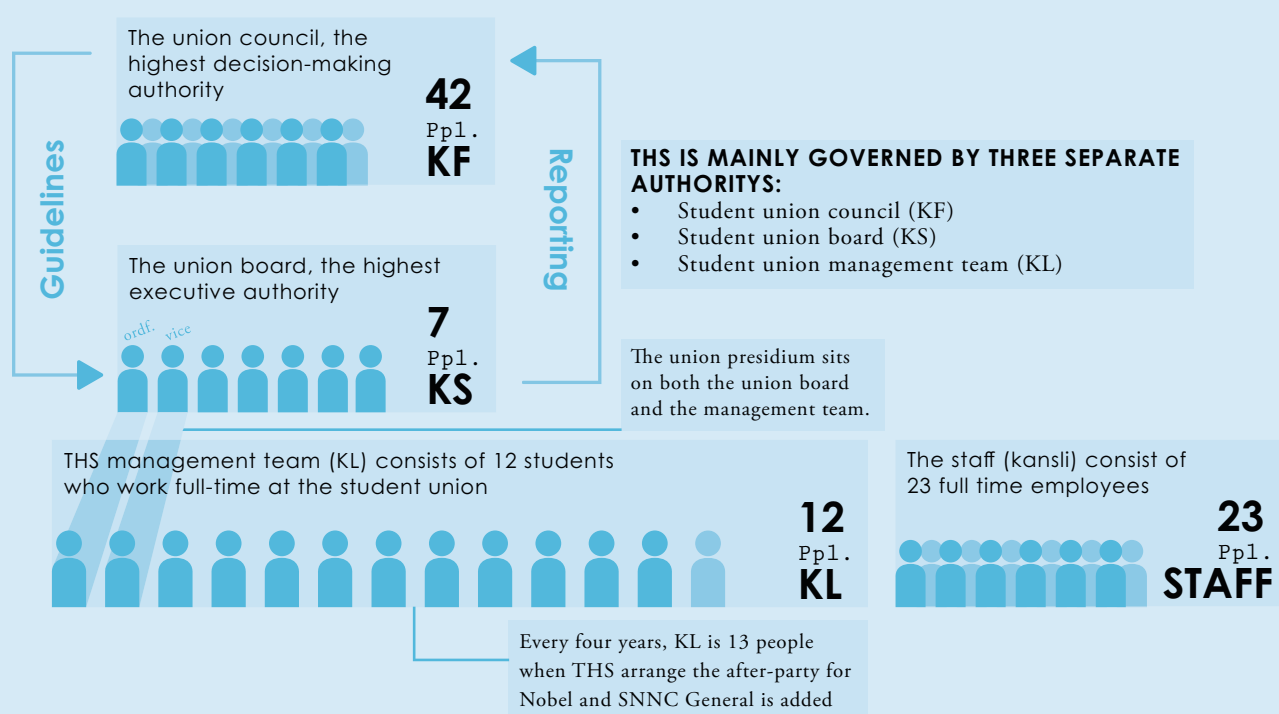
THS's Nomination Committee prepares elections for compensated positions and positions of trust in THS's activities. The preparation work involves helping the union choose the right person for the right position.

The Presidium convenes the Union Council, THS's answer to the Swedish parliament. The Presidium is responsible for providing documents for the meetings and ensuring that

management meeting participants have the most accurate assumptions to make the best decision. As Standard Bearer Head you have the main responsibility when THS is represented with stands or standard bearers.

The Management Team's subgroups

MG (Marketing Group), NKM (Nymble Klubbmästeri), RN (Radionämnden), MAIN, THS Sports and International Reception, THS Sustainability, Armada, and Future are the union management's subgroups. Those responsible for these are in the Management Team and handle events and labour market fairs, among other things.



Vill du jobba med cybersäkerhet eller signalspaning?

På FRA är nyfikenheten och viljan att lära viktigare än att kunna allt när du börjar.

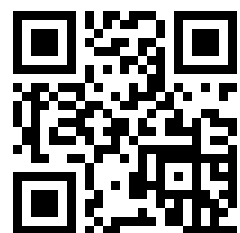
Vi är en teknikintensiv verksamhet som arbetar med signalspaning och cybersäkerhet och utgör en del av Sveriges underrättelsetjänst.

Genom att identifiera yttre hot skyddar vi Sveriges trygghet, vår demokrati och vårt sätt att leva.

Vi är i kärnan av det svenska cyberförsvaret och skyddar de viktigaste verksamheterna och den mest kritiska infrastrukturen från angrepp.

Vårt huvudkontor ligger på Lovön strax väster om Stockholm, och hos oss kan du arbeta med cybersäkerhet, IT-teknik, signalspaning och mycket mer.

Utforska möjligheterna
på fra.se



Professionell
utveckling

Generös
friskvård

Balans
mellan jobb
och fritid



FRA



THIS IS WORKING FOR YOU

THS consists of an office of just over 20 employees. With different areas of responsibility, our officials are tasked with working for the benefit of the students.

The office comprises numerous different roles. The work is managed by the THS Chief of Staff, who has overall responsibility of the union. The communications department handles issues such as marketing and internal and external communication. In Restaurant Nymble, we have both staff and a property manager, the Nymble Caretaker. At Kårexpeditionen (KårX),

our dedicated employees work with membership issues and other student-related issues. We have a finance department and a PhD student representative that offers all PhD students at KTH free support and advice. In addition, we have THS Kårbokhandel, the union's own book store, where KTH's students can get their course literature at a reasonable price.



Driv energiomställningen med oss på Sigholm

Vi behöver din passion och expertis för att möta energibranschens utmaningar. Bli en del av vårt team och forma framtidens digitala energi- och infrastrukturlösningar.

Västerås, Stockholm, Göteborg, Luleå

Läs mer på sigholm.se →



ASSOCIATIONS TO SUIT EVERYONE

As a THS member, you have the opportunity to participate in approximately 60 union associations in addition to the groups within your chapter. Everyone can find something to their liking. The associations can be classified into various themes, but each has a distinct focus.

Performance

Associations involved in revues, choir singing, and other aesthetic activities.

Tech and Science

These association focus on technology and science.

Networking and Social Impact

Here you will find political associations, networks for women, LGBT students, and other associations focused on sustainability and working for a better world.

Sports

If you're into sports, you also have the opportunity to practice them in the spirit of THS. We have associations for a wide range of sports.





THE CHAPTERS – THE HEART OF STUDENT LIFE

If you are a THS member, you automatically become a member of the chapter you belong to, depending on which course you are taking. Many efforts are made in our 22 chapters to ensure that the students flourish and are happy, such as planning a large number of events

and activities. It is also the chapters that organise the receptions for newly admitted students.

At chapter meetings and through the Union Council, you have the opportunity to influence important issues affecting your chapter.

THS CHAPTERS

Arkitektursektionen (A)

Bergssektionen (B)

Datasektionen (D)

Doktorandsektionen (Dr)

Elektrosektionen (E)

Flygsektionen (T)

Fria sektionen (Fria)

Fysiksektionen (F)

Ingenjörssektionen Bygg (IsB)

Ingenjörssektionen

Flemingsberg (IsF)

Kemisektionen (K)

Maskinsektionen (M)

Produktionssektionen (P)

Samhällsbyggnadssektionen (S)

Sektionen för Civilingenjör och Lärare (CL)

Sektionen för Energi och Miljö (W)

Sektionen för Industriell ekonomi (I)

Sektionen för Informations-

och Nanoteknik (IN)

Sektionen för Medicinsk Teknik (MfT)

Sektionen för Medieteknik (Media)

Sektionen för Öppen Ingång (OPEN)

Tbas



MEMBERSHIP

If you are a student at KTH and have an active course registration in Ladok, you can become a member of THS. Simple as that. As a member, you enjoy a number of benefits. In addition to benefits in the form of discounts, you will get access to a large and influential network, as

well as a warm and welcoming student community. The Student Union is a way to get the most out of your time at the university while allowing you to make your voice heard in important issues that concern your studies.

Why become a member?

Discounts

- 15 SEK discount on Restaurant Nymble's lunch menu.
- Up to 50% discount when renting facilities in Nymble.
- Free entrance to the after-exam pubs at Nymble.
- 5% discount on office supplies at Kårbokhandeln.
- One year free subscription to FOKUS. To get your subscription code, contact KårX.

Benefits

- Participate in THS, chapter, and union association activities.
- Eligibility to sign up at SSSB, the joint housing queue for all student unions in Stockholm.
- Access to Nymble outside of regular opening hours, talk to KårX to get it.
- Apply for positions of trust within THS Central, chapters, and union associations.

Tekniska Högskolans Studentkår

Mailing address:

Drottning Kristinas väg 15
100 44 Stockholm
Sweden

Email:

karx@ths.kth.se

Website:

www.thskth.se



Var med och utveckla framtidens läkemedel

Vi söker friska personer som vill delta i våra kliniska studier. Anmäl dig till vår databas och bidra till att göra läkemedel bättre.

Du får ersättning för ditt deltagande samt möjlighet till reseersättning.



Läs mer och anmäl dig på

FORSKNINGSPERSON.SE



CLINICAL TRIAL CONSULTANTS