

**WE IMPROVE**

**QUALITY OF LIFE**





# REAC IN BRIEF

**We are passionate about helping people in their daily lives. By providing a wide range of advanced power solutions suitable for many different applications, we hope to make people's lives a little bit easier.**

**OUR MOTION SOLUTIONS** – actuators, lift, tilt & control systems. All of them meeting strict quality and safety standards. Our customers have different needs, we find the best solution to meet the requirements.

**OUR VALUES** are the characteristics and qualities of who we are. We genuinely care for our customers and products. We deliver what we promise, and quality is the key to everything we do. Innovation and flexibility are in our core.

**OUR MAIN MARKET** is Medical- and Rehabilitation equipment. REAC's expertise has proven beneficial to many different industries and motion challenges. We are confident to say that we can solve a wide range of motion problems, so please challenge us!

**THE PRODUCTS PRESENTED** in this catalogue comprise our standard range; however, we can do much more than this. Contact us and we will find a solution adapted to your requirements.

**WE PUT YOUR PRODUCT IN MOTION,  
BY PUTTING MOTION SYSTEMS  
INTO YOUR PRODUCT.**





# FROM IDEA TO PRODUCT

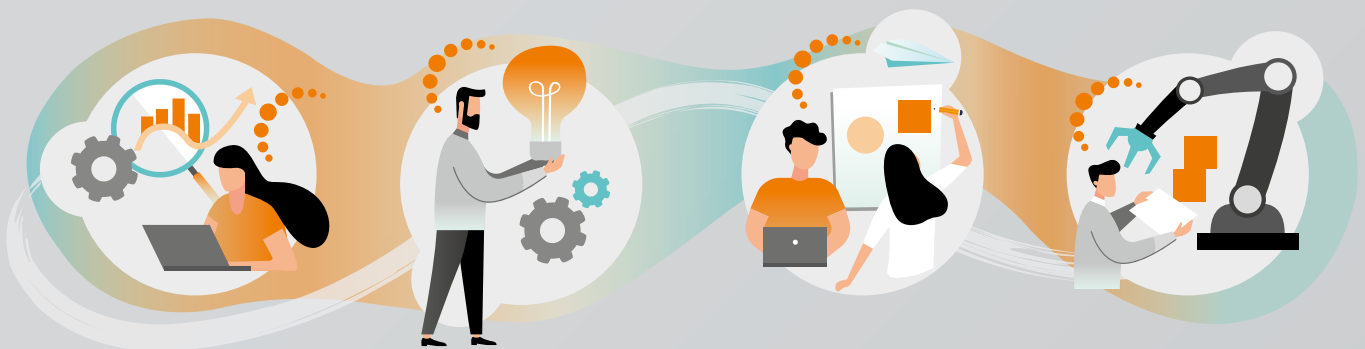
**Different customers have different needs. We design, adapt and strive for quality and excellence in all our products and services. Tell us what you want, and we will provide you with the best solution in the industry.**

**OUR STRONG** inhouse R&D team works closely with our customers to create solutions to each individual need. Thanks to our extensive experience in research and development chances are that we have already developed a product that can be the perfect match for you. That means faster time-to-market and operational efficiency. Utilize our capacity, expertise and adaptability early in your R&D process and we will help you design the best product for your needs. Our goal is always to improve safety, save energy, lower costs, reduce downtime and reduce maintenance, to provide the very best Motion Systems for different needs.

**RESPECTFUL AND TRUSTING** teamwork is crucial to our success, as well as working methodically according to our four-step process:

## **PRE STUDY – CONCEPT – DESIGN – MANUFACTURING**

We develop and produce actuators, control systems and seating modules systems inhouse from sheet metal to final product.







# CRAFTED FOR REALITY

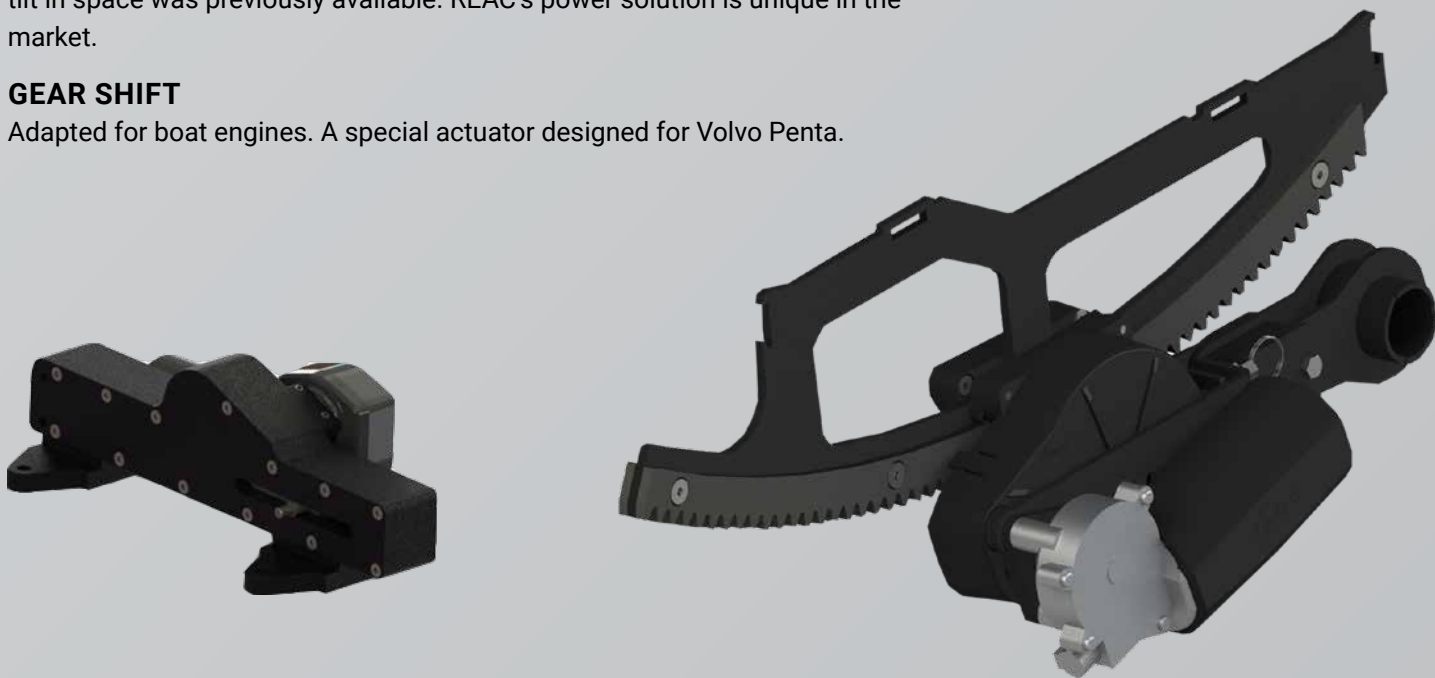
**WE CREATE** custom-made solution, in many cases proven to be more durable and innovative than previously existing standard products, as well as having a more attractive design. We work closely with the client's engineers making sure the product is well integrated fulfilling all demands.

## **POWERED TILT IN SPACE**

This product was developed for manual wheelchairs, for which only manual tilt in space was previously available. REAC's power solution is unique in the market.

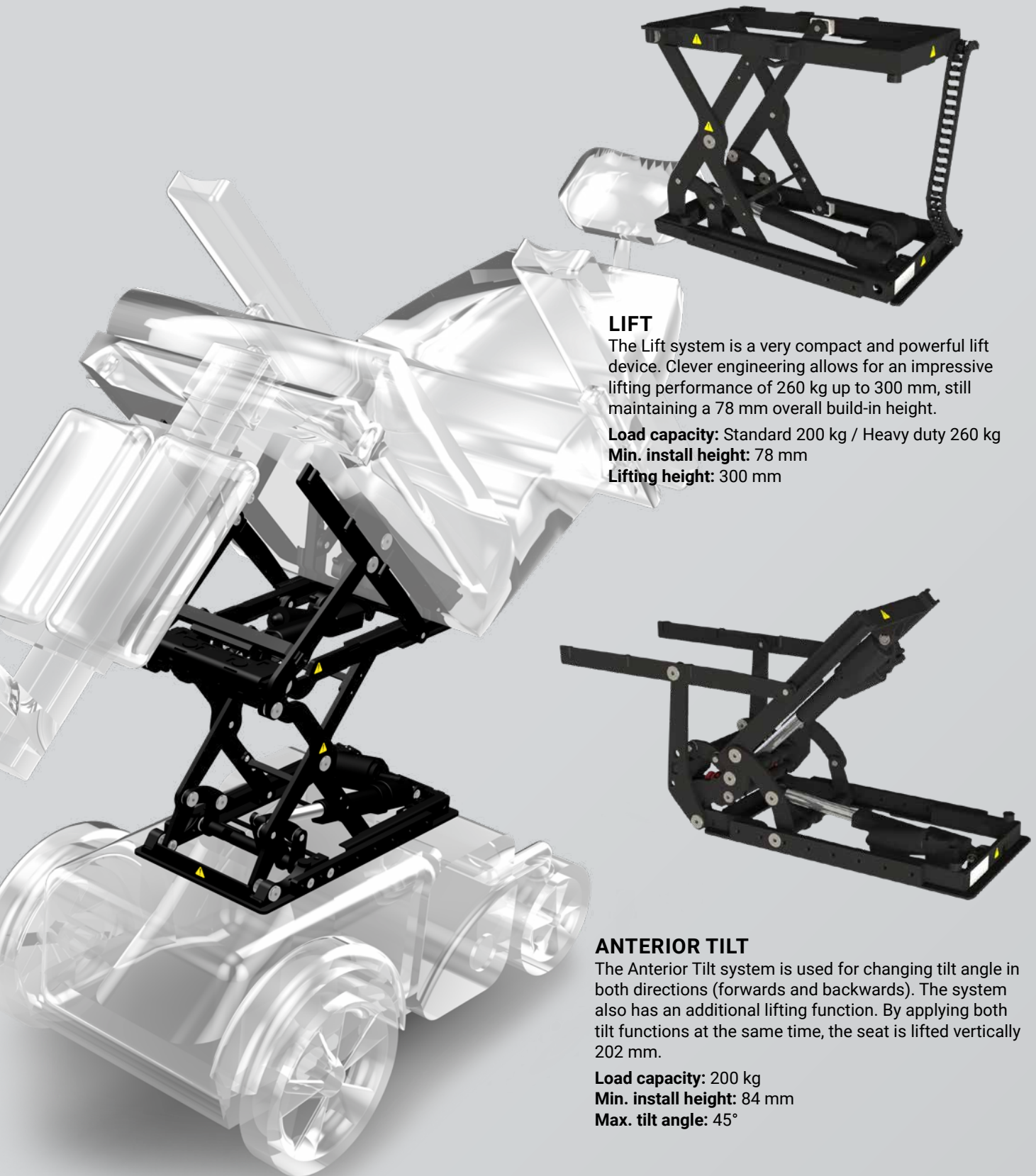
## **GEAR SHIFT**

Adapted for boat engines. A special actuator designed for Volvo Penta.



# SEATING MODULES

REAC has deep expertise in Motion Systems. We provide high-precision standard lift and tilt systems, adapt existing systems and design new solutions.



## LIFT

The Lift system is a very compact and powerful lift device. Clever engineering allows for an impressive lifting performance of 260 kg up to 300 mm, still maintaining a 78 mm overall build-in height.

**Load capacity:** Standard 200 kg / Heavy duty 260 kg

**Min. install height:** 78 mm

**Lifting height:** 300 mm

## ANTERIOR TILT

The Anterior Tilt system is used for changing tilt angle in both directions (forwards and backwards). The system also has an additional lifting function. By applying both tilt functions at the same time, the seat is lifted vertically 202 mm.

**Load capacity:** 200 kg

**Min. install height:** 84 mm

**Max. tilt angle:** 45°



### TILT

The Tilt system is a very compact and powerful tilt device, which can be customized to fit your application. Clever engineering allows for tilting high loads while still maintaining a small build-in height.

**Load capacity:** Standard 200 kg / Heavy duty 250 kg

**Min. install height:** 76 mm

**Max. tilt angle:** 50°



### LIFT & TILT

The Lift & Tilt system is a very compact and powerful device. It combines the features in the separate lift and tilt modules, which makes it possible to lift and tilt 200 kg up to 400 mm and to a 50° angle.

**Load capacity:** 200 kg / 260 kg

**Min. install height:** 80 mm / 91 mm

**Max. tilt angle:** 50°



### POWER TILT IN SPACE

Compact and powerful Tilt system that can be customized to fit your application. Specially designed for manual wheelchairs and gurney tilt motion.

**Max. capacity and drive junction:** 500N

**Max. tilt angle:** 50°

**Weight:** 3.5 kg



### STAND UP SYSTEM

The Stand up system helps wheelchair users to a standing position. It is a standing support system originally designed as a "bolt on solution" for the powered wheelchair industry.

REAC also offers a Stand up system with Tilt. This system helps users from sitting to standing and lying positions. It also enables the user to tilt, anterior tilt and lift.

**Load capacity:** 160 kg

**Weight:** 33 kg / 38 kg

**Max. tilt angle:** 45°



# ACTUATORS

REAC provides high-quality electrical linear actuators. All actuators can be customized to your specific application needs. Many of them can also be equipped with integrated position-feedback options to provide accurate control over your system.



**RE1000** The RE1000 is a strong inline actuator. Build in length will vary depending on the variant.  
**Max. push/pull force:** 2000N  
**Build-in length:** 155–176 mm + stroke  
**IP-class:** IPX4



**RE1001** Powerful and sleek.  
**Max. push/pull force:** 1500N  
**Build-in length:** 176 mm + stroke  
**IP-class:** IPX4



**RE1004** Powerful inline actuator, with limit switches as standard.  
**Max. push/pull force:** 1500N  
**Build-in length:** 197 mm + stroke  
**IP-class:** IPX1



**RE2000** Small but powerful.  
**Max. push/pull force:** 2500N  
**Build-in length:** 118 mm + stroke  
**IP-class:** IPX4



**RE3006** our latest actuator in the 3000 family. Visit our website to learn more about the different variants.  
**Max. push force:** 6000N  
**Build-in length:** 160 mm + stroke  
**IP-class:** IPX1



**RE5004** Quiet high power actuator. Housing in composite.  
**Max. push force:** 6000N  
**Max. pull force:** 4000N  
**Build-in length:** 144 mm + stroke  
**IP-class:** IPX1



**RE25** Compact, strong and robust. 360° stepless rotational motor and brackets for high flexibility in assembling and development.  
**Max. push force:** 5000N  
**Build-in length:** 110 mm + stroke  
**IP-class:** IPX 1-4



**RE35** Robust and compact with a build-in length of only 97 mm (up to 150 mm).  
**Max. push force:** 6000N  
**Build-in length:** 97–150 mm + stroke  
**IP-class:** IPX1 and IPX4



# CONTROL SYSTEMS

REAC's high-quality control systems puts you in charge of your electrical actuators and lift and tilt systems. They are compatible with all REAC actuators and lift and tilt systems. If you are working with a new product or a project, please contact REAC to learn more about how to best use our RCB systems.



**RHC10** A multi-channel hand control unit, that can be equipped with up to 10 buttons and 10 LED indicators. With a customized top foil, the hand control can be designed for your unique application.



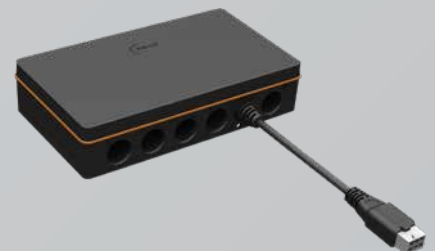
**RPP10** REAC Power Pack - RPP10 is a 2.9 Ah lead battery. RPP10 is compatible for REAC control box RCB11 and RCB12



**RCB10+** is a 4-channel control box with a 2 Ah battery pack and an external charger, that can operate almost any actuator. By connecting the control system to a PC you can easily configure your individual settings. It has customizable current limits, soft start and soft stop, calibrated pre-delivery.



**RCB11** A 2-channel control box intended to be used where space is limited in a various range of assistive products. Can operate almost any actuator or DC-motor. It has customizable current limits, soft start and soft stop, adjusted via REAC Service Tool, RST10. To be supported by RPP10 battery pack and prepared for connecting to AC mains power.



**RCB12** A compact 4-channel control box ideal for limited spaces in a various range of assistive products. Operates almost any actuator or DC-motor. Compatible with REAC Power Pack, RPP10 and prepared for connecting to AC mains power.



# PART OF SOMETHING BIGGER

---

**Our focus is always on quality and safety. We are certified according to ISO 9001, 14001, 45001, and naturally 13485 Medical Devices – Quality Management System, meaning we fulfill the requirements to design and manufacture medical devices. We have in house testing capabilities on everything from function and design to durability and strength.**

REAC is part of MS Group, working independently but with a common purpose: to improve quality of life for people with disabilities and other mobility challenges. MS Group is wholly owned by Latour Industries, which gives us a solid foundation.

## **TOGETHER FOR AGENDA 2030**

REAC supports Agenda 2030, the UN Sustainable Development Goals. REAC supports the important work done by Solvatten (Sunwater). Enabling thousands of families in parts of Africa to access safe and warm water. The collaboration has through sustainable solar energy enabled improved living conditions and decreased the need for burning biomass equal to 800 hectares of forest. The project is implemented through PLAN International, UNHCR and International Aid Services, which makes sure that the support reaches the most vulnerable families in need of Solvatten – [www.solvatten.org](http://www.solvatten.org)



*At REAC we bring value to our customers and improve people's life, through our performance and excellent products and services. We strive to operate our business in a way that promotes economic, environmental, and social sustainability."*

– CHRISTINA ALENVRET, HEAD OF REAC DIVISION



## CONTACT US

[www.reac-group.com](http://www.reac-group.com)  
[info@reac.se](mailto:info@reac.se)

